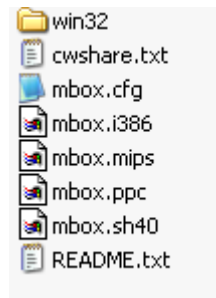


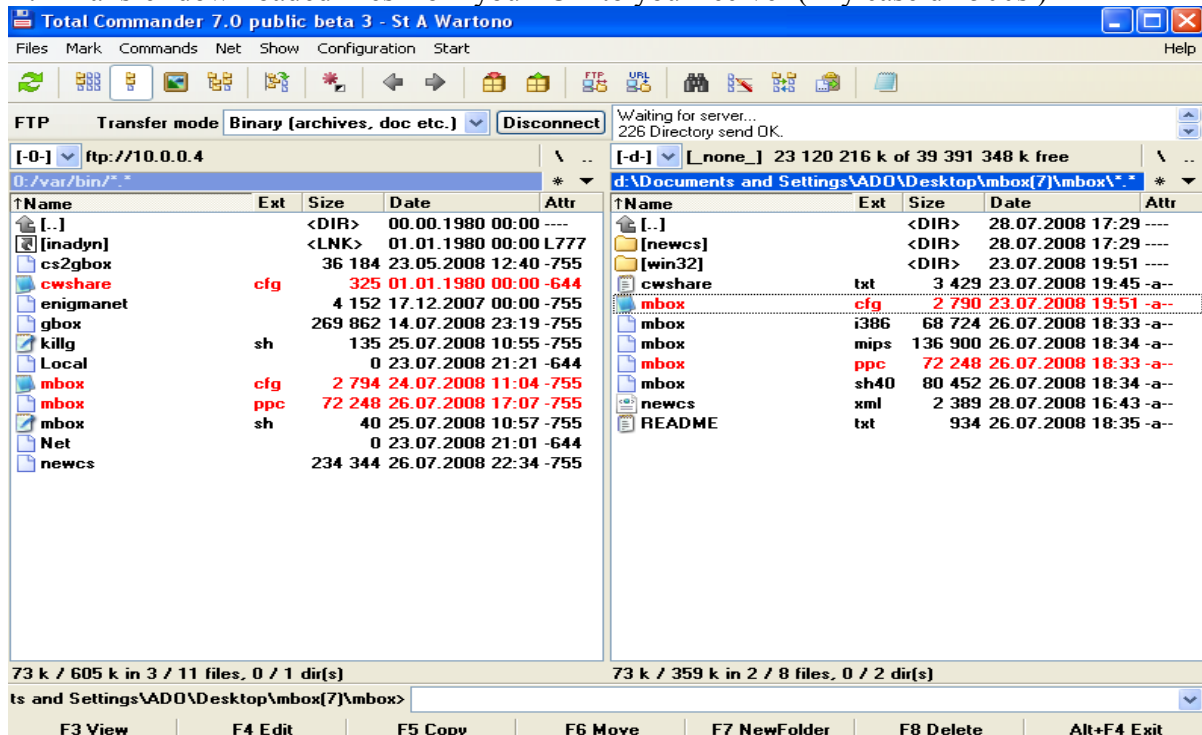
HOW TO START MBOX

go to <http://mbox.exyusat.com/index.php> and read please the first post, he contains also the mbox files.



Win32 (folder)	Here are files neccery for windows
Cwshare.cfg	Example how you can configure cwshare (you can use your old one)
Mbox.i386	For Linux - PC
Mbox.mips	For enigma2 images/reciver
Mbox.ppc	Dreambox (not for enigma2 images/reciver)
Mbox.sh40	Ip9000hd or reciver like it (same processor)
Readme.txt	To be read, it not empty

1. Transfer downloaded files from you PC – to you Reciver (my case dm500s)



- you can use you old cwshare.cfg so just copy it from /var/keys to /var/bin or you can change the mbox.cfg :

```
K: { 0 }
```

```
// K option -> where is cwshare.cfg,dmx.cfg files
// K: { folder_path_to_files, example: K: { /var/keys/ } }
// default 0 ==> folder path where mbox.xxx file is !!!!
```

if I change K: { 0 } to K: { /var/keys/ } it means the mbox will search the cwshare.cfg in /var/keys folder. If you leave it as 0 this means he will serch for it in the same folder where the main execute file is.

Change also the

```
T: { 0 }
```

```
// T option -> where to store temp files ... (share.info,debug.txt ,etc.)
// T: { folder_path_to_files, example: T: { /tmp/ } }
// default 0 ==> folder path where mbox.xxx file is !!!!
```

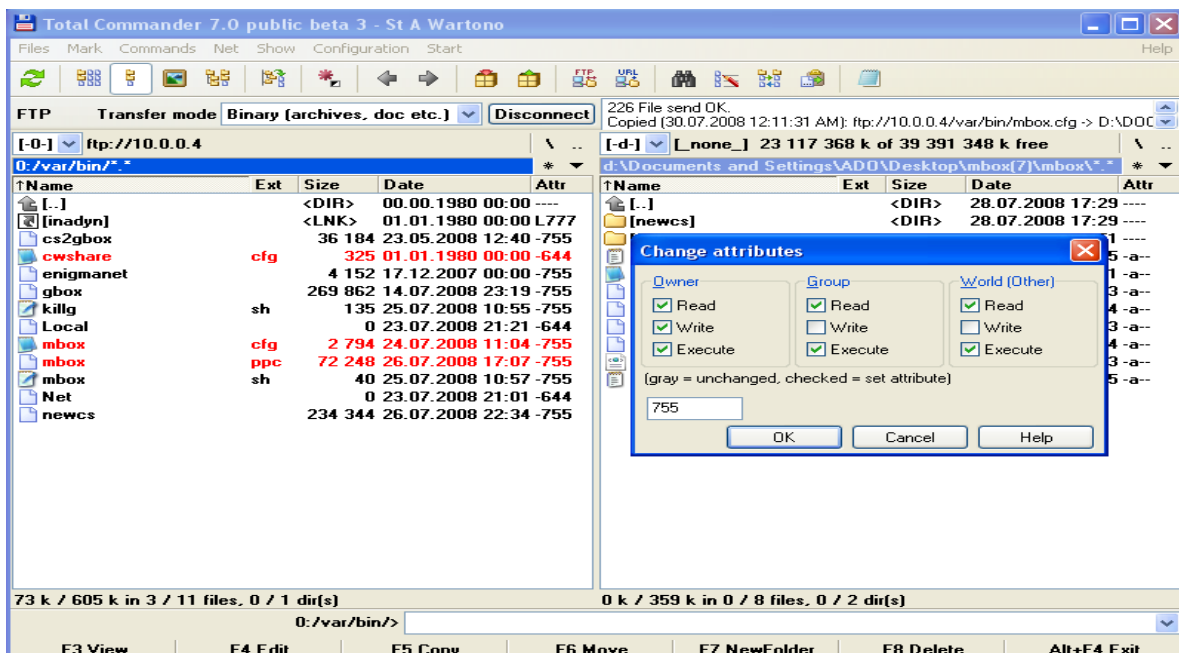
to

```
T: { /tmp/ }
```

```
// T option -> where to store temp files ... (share.info,debug.txt ,etc.)
// T: { folder_path_to_files, example: T: { /tmp/ } }
// default 0 ==> folder path where mbox.xxx file is !!!!
```

what it means it will create temporary file share.onl, share.info, or debug in /tmp, so after a reset this files are deleted, if you leave it I the sam folger as the main execute file, the debug will be very very big after some time.

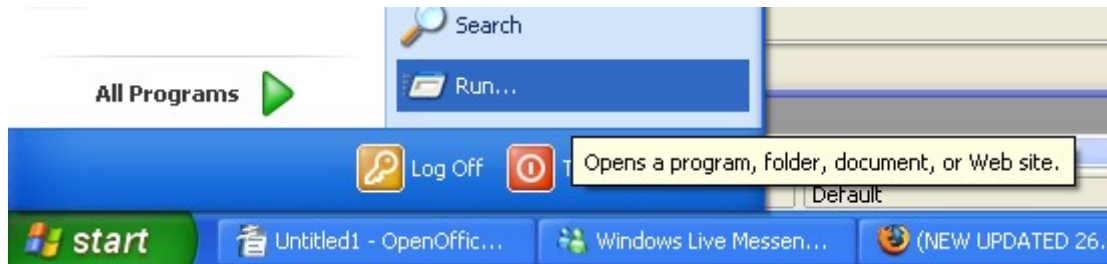
- Change the rights of the files (attribute) to 755



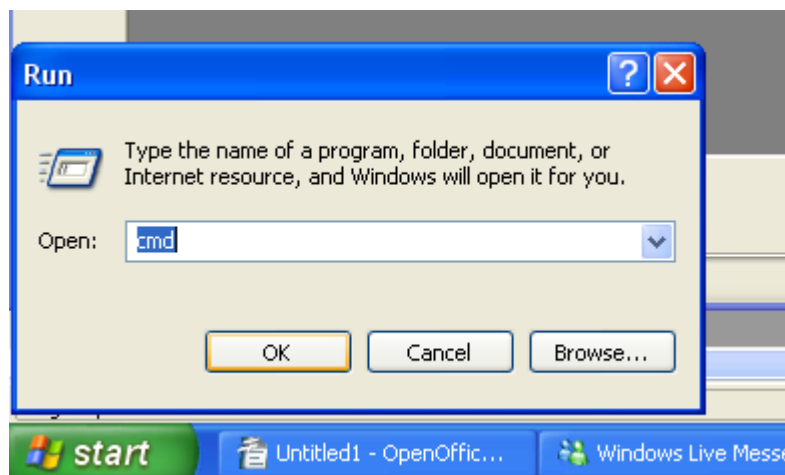
- now we go to telnet to activate, but before if you dont know how to stop other emus running, go to you emu-manger and change it to common interface.

How to telnet correctly :

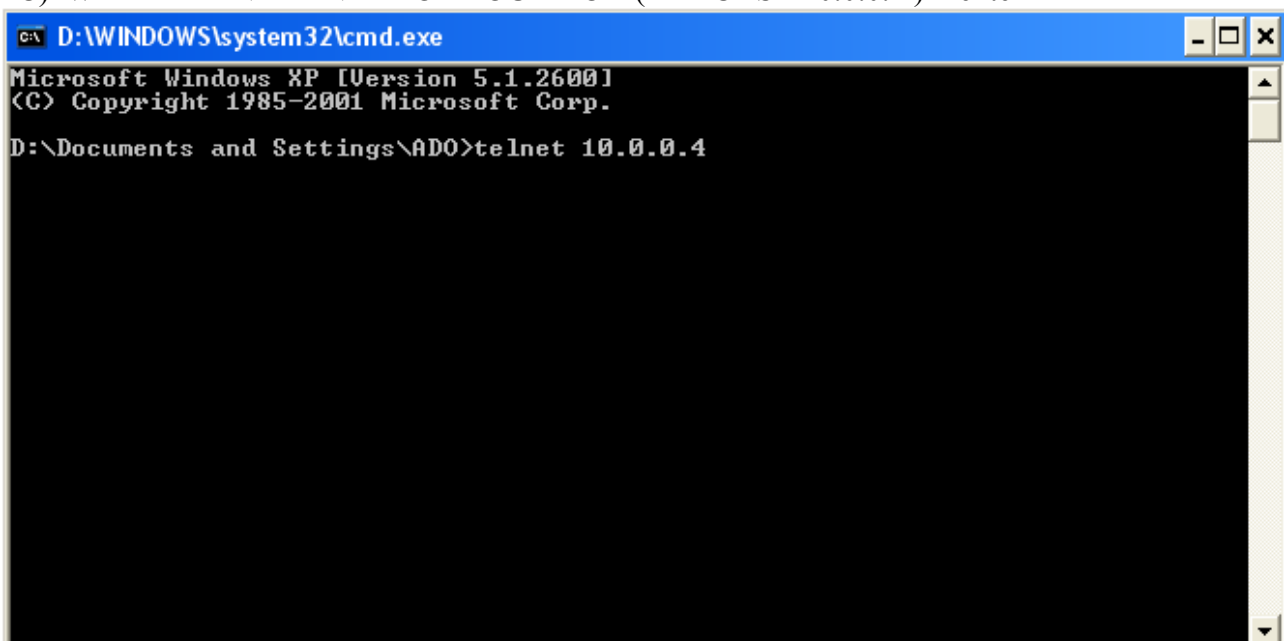
4a) GO TO START / RUN



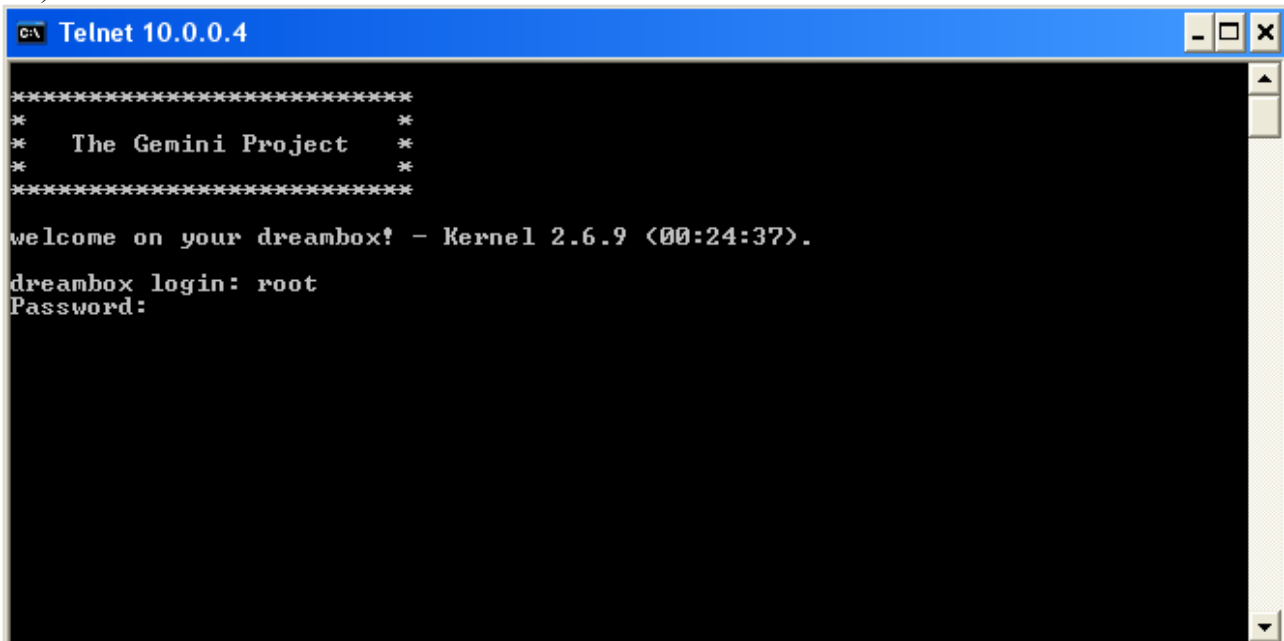
4B) WRITE CMD + enter



4C) WRITE TELNET AND IP OF YOUR BOX (MY CASE 10.0.0.4) + enter



4D) LOGIN ON YOU BOX

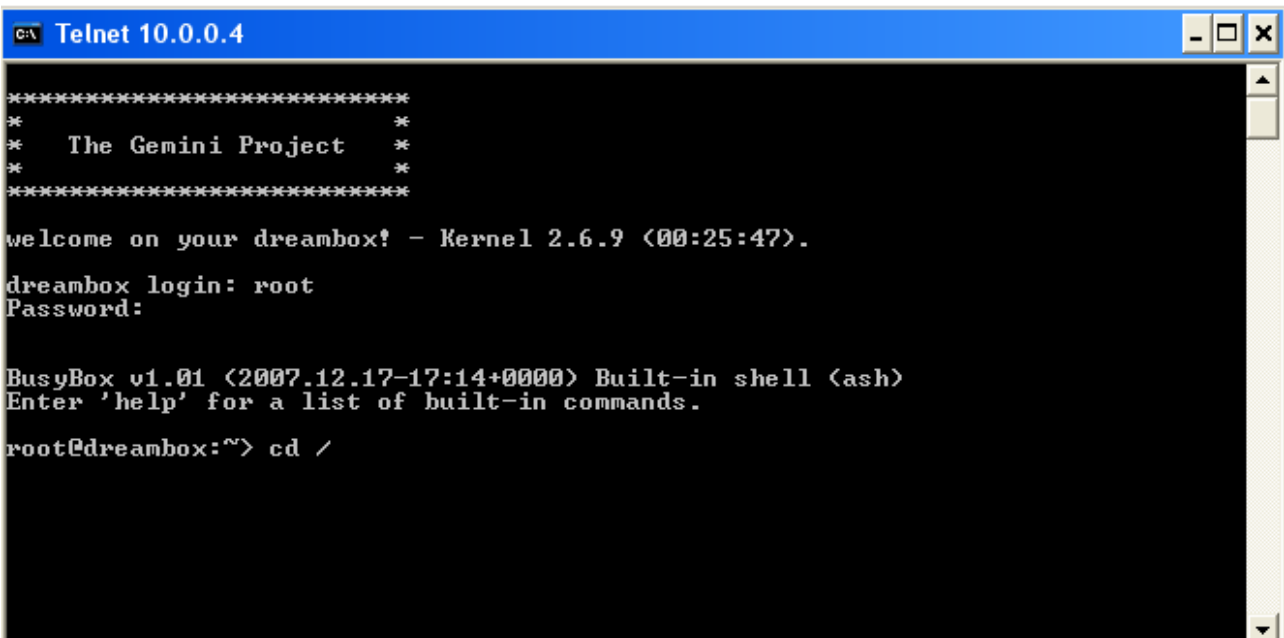


```
C:\ Telnet 10.0.0.4
*****
*                               *
*   The Gemini Project           *
*                               *
*****

welcome on your dreambox! - Kernel 2.6.9 (00:24:37).
dreambox login: root
Password:
```

4E) WRITE cd /

(when connect via telnet to 7020 / 600 / 800 Dreambox you come to a empty place so you have to leave it to come to root

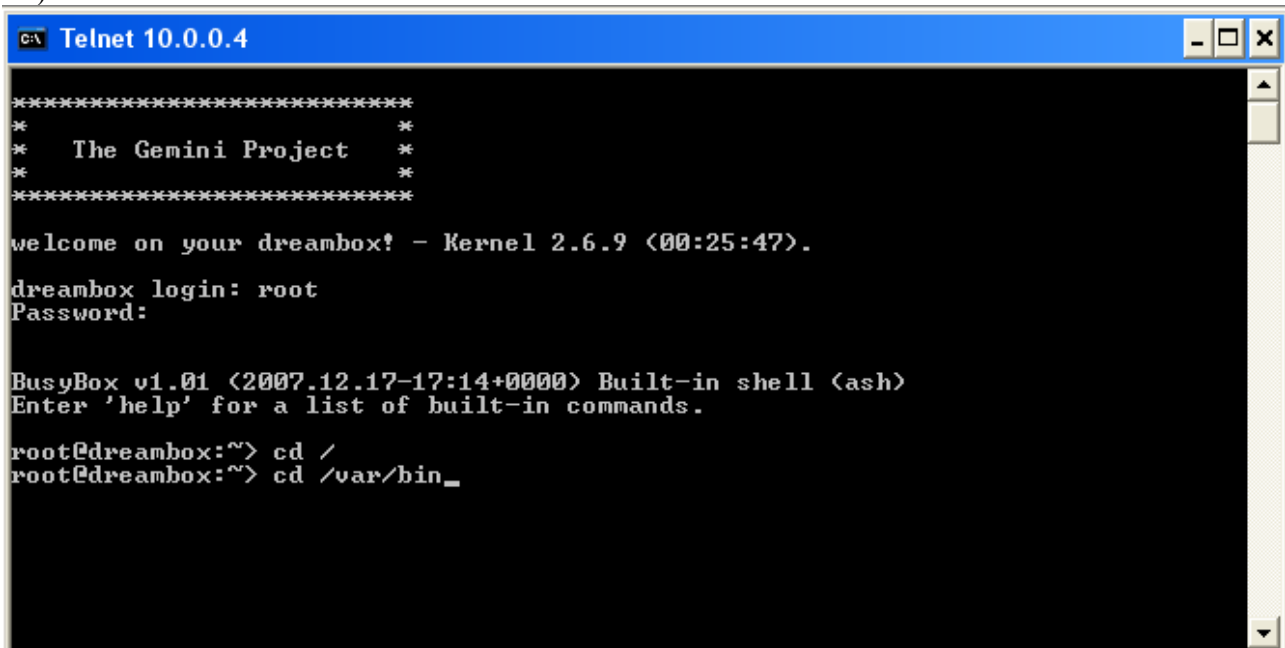


```
C:\ Telnet 10.0.0.4
*****
*                               *
*   The Gemini Project           *
*                               *
*****

welcome on your dreambox! - Kernel 2.6.9 (00:25:47).
dreambox login: root
Password:

BusyBox v1.01 (2007.12.17-17:14+0000) Built-in shell (ash)
Enter 'help' for a list of built-in commands.
root@dreambox:~> cd /
```

4F) write cd /var/bin + enter



```
C:\> Telnet 10.0.0.4

*****
*                               *
*   The Gemini Project           *
*                               *
*****

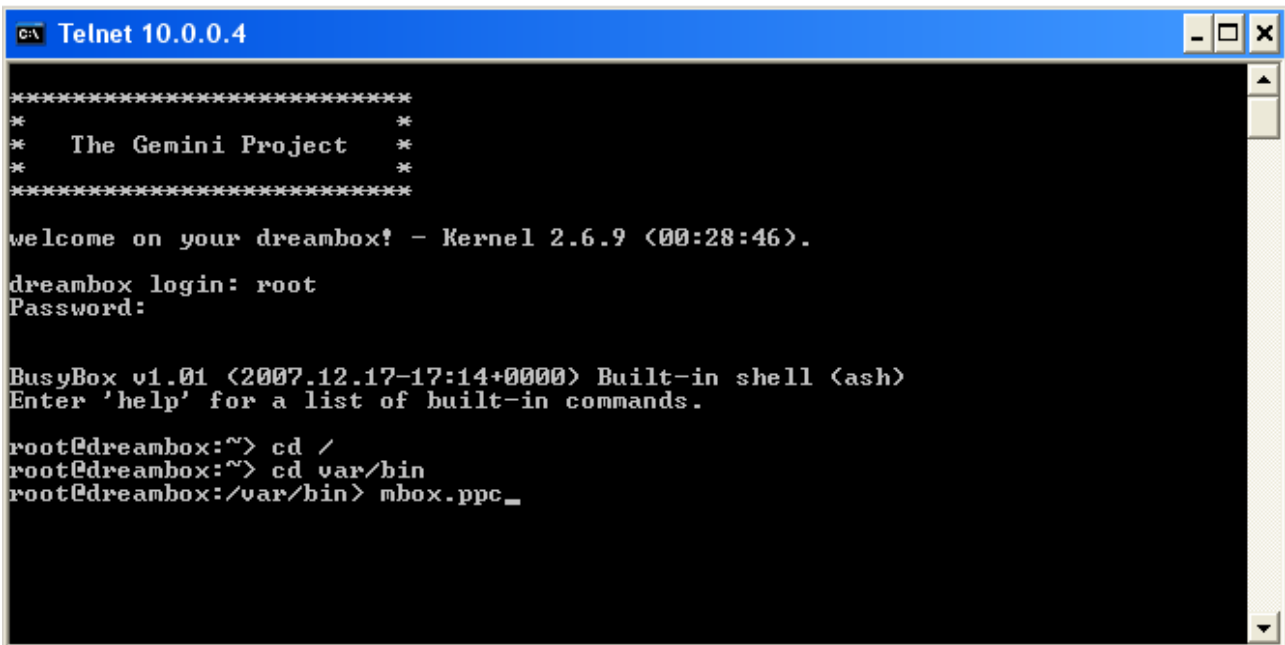
welcome on your dreambox! - Kernel 2.6.9 <00:25:47>.

dreambox login: root
Password:

BusyBox v1.01 <2007.12.17-17:14+0000> Built-in shell (ash)
Enter 'help' for a list of built-in commands.

root@dreambox:~> cd /
root@dreambox:~> cd /var/bin_
```

4G) write mbox.ppc or in some case ./mbox.ppc



```
C:\> Telnet 10.0.0.4

*****
*                               *
*   The Gemini Project           *
*                               *
*****

welcome on your dreambox! - Kernel 2.6.9 <00:28:46>.

dreambox login: root
Password:

BusyBox v1.01 <2007.12.17-17:14+0000> Built-in shell (ash)
Enter 'help' for a list of built-in commands.

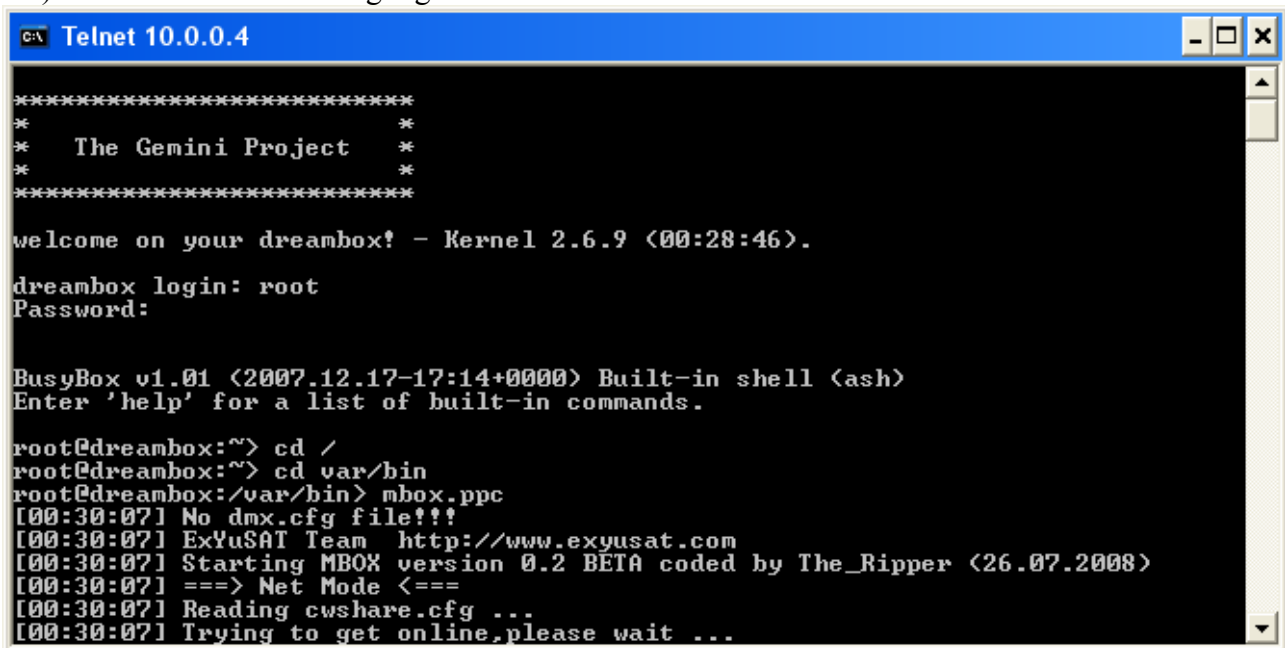
root@dreambox:~> cd /
root@dreambox:~> cd var/bin
root@dreambox:/var/bin> mbox.ppc_
```

for 7025/800 dreambox use please : mbox.mips

for ip9000hd use : mbox.sh40

for Linux PC use : mbox.i386

4H) MBOX start and a debug log is created.



```
C:\ Telnet 10.0.0.4
*****
*           *
*  The Gemini Project  *
*           *
*****

welcome on your dreambox! - Kernel 2.6.9 (00:28:46).

dreambox login: root
Password:

BusyBox v1.01 (2007.12.17-17:14+0000) Built-in shell (ash)
Enter 'help' for a list of built-in commands.

root@dreambox:~> cd /
root@dreambox:~> cd var/bin
root@dreambox:/var/bin> mbox.ppc
[00:30:07] No dmx.cfg file!!!
[00:30:07] ExYuSAT team http://www.exyusat.com
[00:30:07] Starting MBOX version 0.2 BETA coded by The_Ripper (26.07.2008)
[00:30:07] ==> Net Mode <==
[00:30:07] Reading cwshare.cfg ...
[00:30:07] Trying to get online, please wait ...
```

4I) close this telnet windows open You Ftp program and go to /tmp, there you will find a debug file that mbox has created, please copy this and post it on :

<http://mbox.exyusat.com/index.php?showtopic=40>